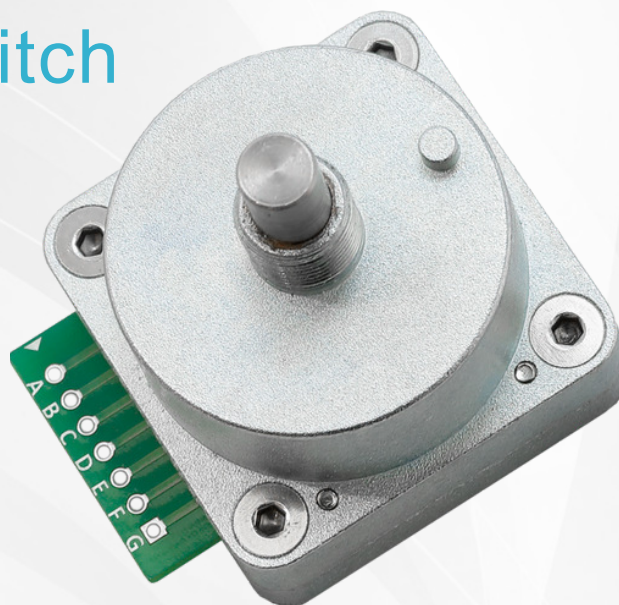
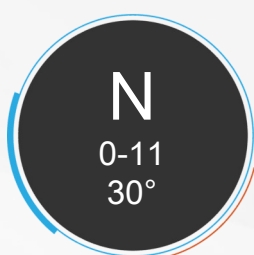




YEULIAN

YLDP CODE SWITCH

Digital Rotary Switch



The code switch from YEULIAN Electronics boasts mature manufacturing techniques, enabling high-precision band switching that ensures signal stability and reliability. It can also switch quickly to meet the demands of high-speed data transmission. Additionally, the switch can withstand high-voltage input signals and has excellent capacitance and impedance matching capabilities.

The YLDP series has a robust and durable mechanism design with a fully enclosed structure, offering stability, reliability, oil resistance, and waterproofing advantages. Customers can customize the coding and segment number as needed, making I/O point configuration more convenient and meeting the diverse application needs.



YEULIAN Electronics



sales@yeulian.com



+886-4-25671940



+886-4-25671941



YEULIAN

YLDP CODE SWITCH

Features



CE



RoHS

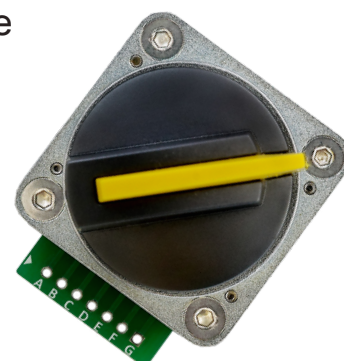


IP65



Warranty

- Angle ranges: 30°, 0-11 positions.
- Five encoding types: Point to Point/Binary/Complement Binary/Gray Code/Complement Gray Code.
- High precision and fast switching, ensuring signal stability and reliability
- Robust and durable mechanical design, with excellent capacitance and impedance matching characteristics
- Support for connector and multiple knob options
- Sealed design to reduce debris and dust ingress
- Backstage segment settings, no need to disassemble components to change the number of segments
- Suitable for unique functions such as magnification, feed rate, and mode
- Over 200,000 cycles lifespan, 4 times more durable than same-spec products
- CE/ROHS certified





YLDP CODE SWITCH

Ordering Information

YLDP - 01 H - 16 CB - K

Series	Output Code	Angle	Position	Wiring	Knob
YLDP=Standard	01=Real Binary	H=13.85°	H=0-25	CB=180°horizontal	0=None
	02=Complement	J=15°	J=0-23	wire connector	K=With Knob1-5
YLDAP=Locator	Binary	N=30°	N=0-11	0=Soldering	*Refer to the page 6
	03=Gray Code				
	04=Complement				
	Gray				
	00=Point to Point				

Major parameters

ITEM		RATED VALUE
Durability	Operating Durability	Over 200,000 cycles of operation
		Contact Resistance: 150mΩ or less
		Insulation Resistance: 50MΩ or more at DC250V
Resistance	Moisture Resistance (Stable State)	Contact Resistance: 100mΩ or less Insulation Resistance: 50MΩ or more at DC250V
	High Temp. Resistance (70±2°C)	Rotation Torque: 0.1 ~ 0.2N · m Contact Resistance: 100mΩ or less
	Low Temp. Resistance (-20±3°C)	Rotation Torque: 0.1 ~ 0.2N · m Contact Resistance: 100mΩ or less



YLDP CODE SWITCH

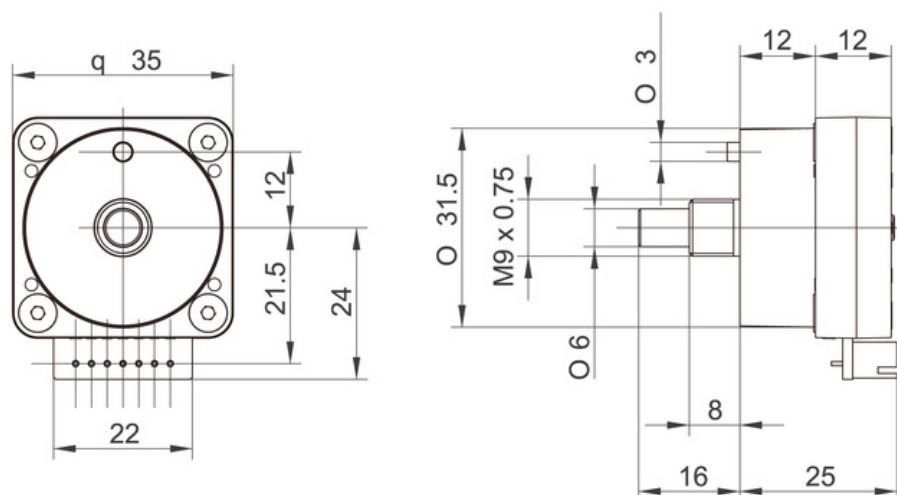
Major parameters

ITEM		RATED VALUE
Operating Temp. Range		- 20°C~+70°C
Storage Temp. Range		- 40°C~+70°C
Mechanical Performance	Rotation Torque	0.1~0.2N · m
	Terminal Strength	3N
	Nut Tightening Strength	≤2N · m
	Stopper Strength	3N · m
Electrical Performance	Contact Resistance	≤100mΩ (including initial conductor resistance)
	Insulation Resistance	Terminal to terminal: ≥500MΩ Terminal to ground: ≥5,000MΩ
	Withstand Voltage	Terminal to terminal: DC250V Terminal to ground: DC1500V
	Rated Voltage	AC : 5V0.5A / 35V0.05A DC : 5V0.25A / 25V0.05A



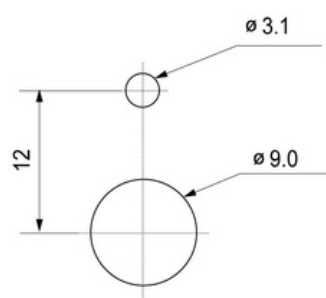
YLDP CODE SWITCH

Dimensions

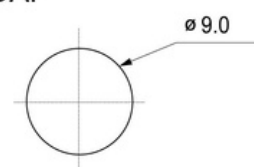


Opening Diagram

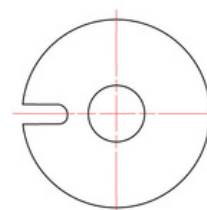
YLDP



YLDAP



LOCATOR



The product information in this catalog may be changed at any time without notice. The photos may be different from the actual product due to printing or display color difference and are for reference only.



YLDP CODE SWITCH

Knob Types

No.	ITEM	DIMENSIONS
K1		
K2		
K3		
K4		
K5		

It is possible that there may be some measurement errors due to the manual measurement of dimensions. Therefore, it is recommended to confirm the dimensions before use to avoid any inconvenience.